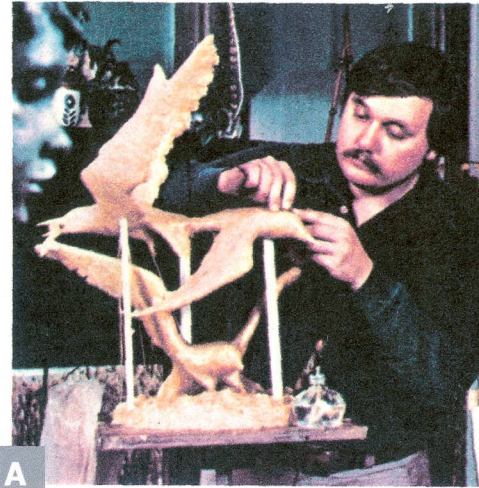
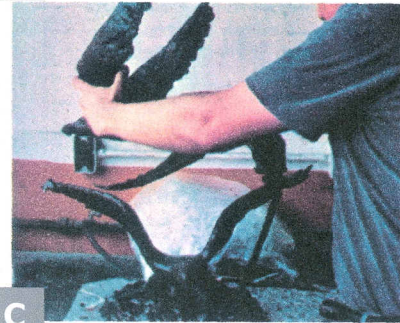


**A.** Sculptor, Bill Osmundsen creates a wax model using his sketches as a guideline. The yellow wax he works with is soft and must be supported by wooden props.



**B.** At the foundry, a plaster and rubber cast is made from the original wax model. A hard black wax is poured into the plaster cast to form the hollow wax positive.



**C.** The sculptor works directly on the black positive to replace any detail lost in the pouring.



**D.** The positive is given a ceramic shell. The heavy white ceramic mold represents at least nine coats of slurry and sand. The shell is dried and then baked in a kiln.

**E.** In the foundry room, the bronze is heated to 2,250 degrees F. in a crucible.

